



**BANK OF SIERRA LEONE**

# Macroeconomic Data Warehouse

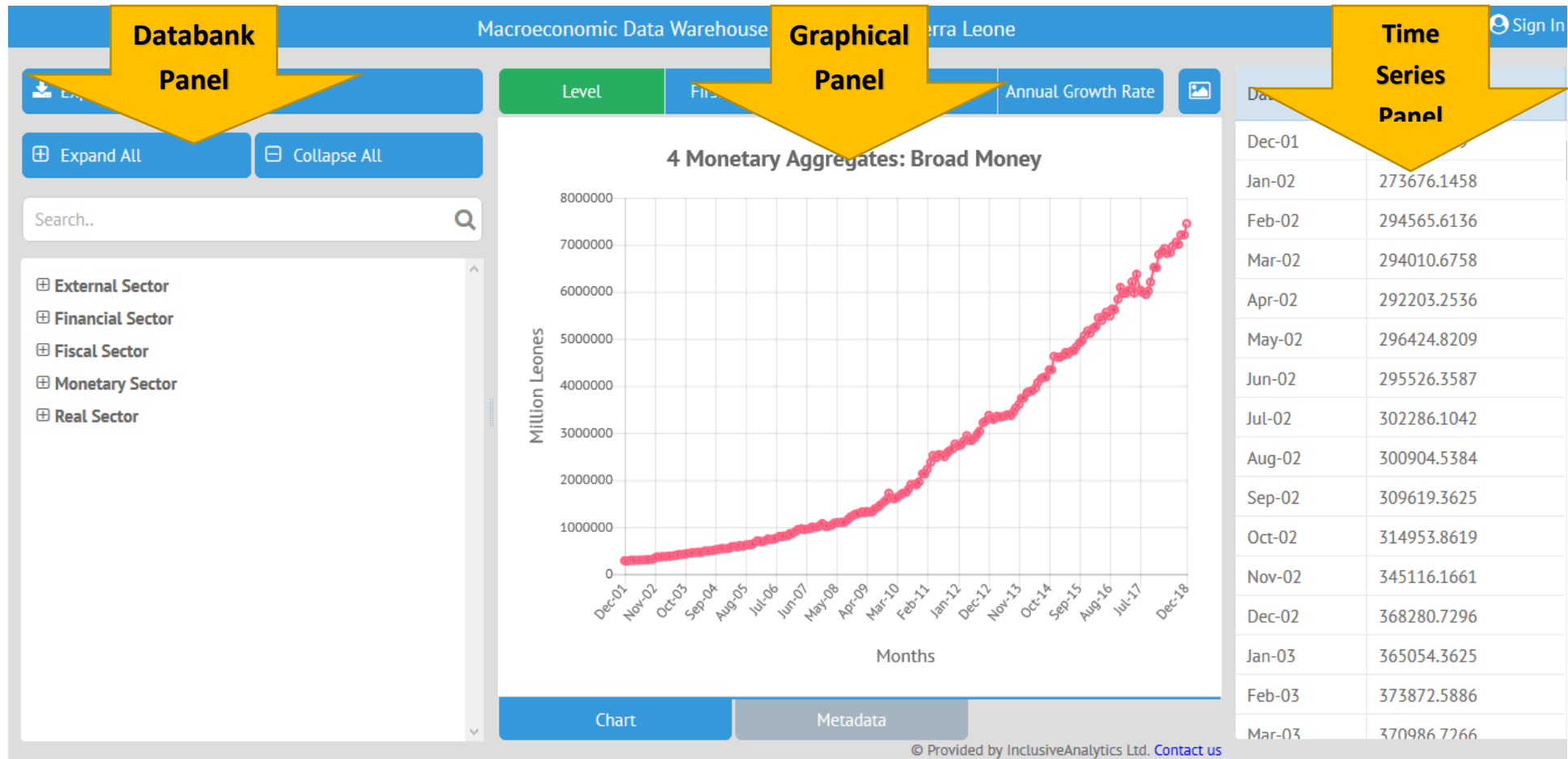
## USERS' GUIDE

<https://sierraleone.datawarehousepro.com>

# VISUALISATION OF DATAWAREHOUSE

The main webpage is divided into three panels:

- Databank Panel
- Graphical Panel
- Time Series Panel



1. Databank Panel is arranged by sectors. That is external, financial, fiscal, monetary and real Sectors. Each sector has underlying variables embedded. E.g. External sector – Balance of Payment, Direction of Trade, Exchange Rates, Value of Export and Imports.
2. Graphical Panel enables you to see time series graphically in levels, first differences, growth rates and annual growth rates for analytical purposes. Meta data of selected data series displays required information that describes and catalogues the series.
3. Time Series Panel displays data by time and frequency as stated in the meta data. (i.e. monthly, quarterly or annual)

## AGGREGATION/DISAGGREGATION OF DATA

- a) As shown in (**Step 1**) below, clicking on the “+ **Expand all**” expands all the data bank and its sub components and further click on “- **Collapse All**” to hide all underlying variables.

- b) As shown in **(Step 2)** below, for selected data set, click on the “+ sign” by the sector to show the embedded indicators and sub indicators and “- sign” to hide them.
- c) To see a data set in graphical form and time series, click the respective indicator in Databank Panel; and will be displayed in graphical and time series panel respectively. As illustrated in **(Step 3)** below.

The screenshot shows the Macroeconomic Data Warehouse of the Bank of Sierra Leone. The interface includes a search bar, navigation buttons for 'Expand All' and 'Collapse All', and a list of sectors and indicators. The 'Monetary Sector' is expanded, and '1 Monetary Aggregates: Reserve Money' is selected. The main panel displays a line chart of Reserve Money in Million Leones from Dec-01 to Dec-18, and a table of values on the right.

Date	Value
Dec-01	136948.7416
Jan-02	124390.1337
Feb-02	130361.7214
Mar-02	136302.9689
Apr-02	133726.5089
May-02	144929.3007
Jun-02	137254.3185
Jul-02	135991.5537
Aug-02	132108.9195
Sep-02	137866.8636
Oct-02	135602.9693
Nov-02	141849.4735
Dec-02	171766.4465
Jan-03	160672.7446
Feb-03	159156.9295
Mar-03	164848.9596

# DOWNLOADING DATASET

- i Collapse the sector to reveal the sub components. **(Step 4)**
- ii Check the box (es) by the variable(s) you intend to download. **(Step 5)**
- iii Click on “Export selected time series” **(Step 6)**
- iv Click on “Export Monthly”; “Export Quarterly” or “Export Annual” **(Step 7)**
- v Accept “ok” or “save” in the dialogue box to download in excel.**(Step 8)**

Macroeconomic Data Warehouse of the Bank of Sierra Leone Sign In

**Step 6** → Export Selected Time Series 4

Expand All Collapse All

Search..

**Step 4** →

- External Sector
- Financial Sector
- Fiscal Sector
- Monetary Sector
  - i. Money Aggregates (National definition)
  - 1 Monetary Aggregates: Reserve Money**
  - 2 Monetary Aggregates: Currency in Circulation
  - 3 Monetary Aggregates: Narrow Money
  - 4 Monetary Aggregates: Broad Money
  - ii. Depository Corporations Survey
  - iii. Central bank survey
  - iv. Other Depository Corporations Survey
  - v. Foreign Assets & Liabilities of Banking System
  - vi. Holdings for Securities by Sector

**Step 5** →

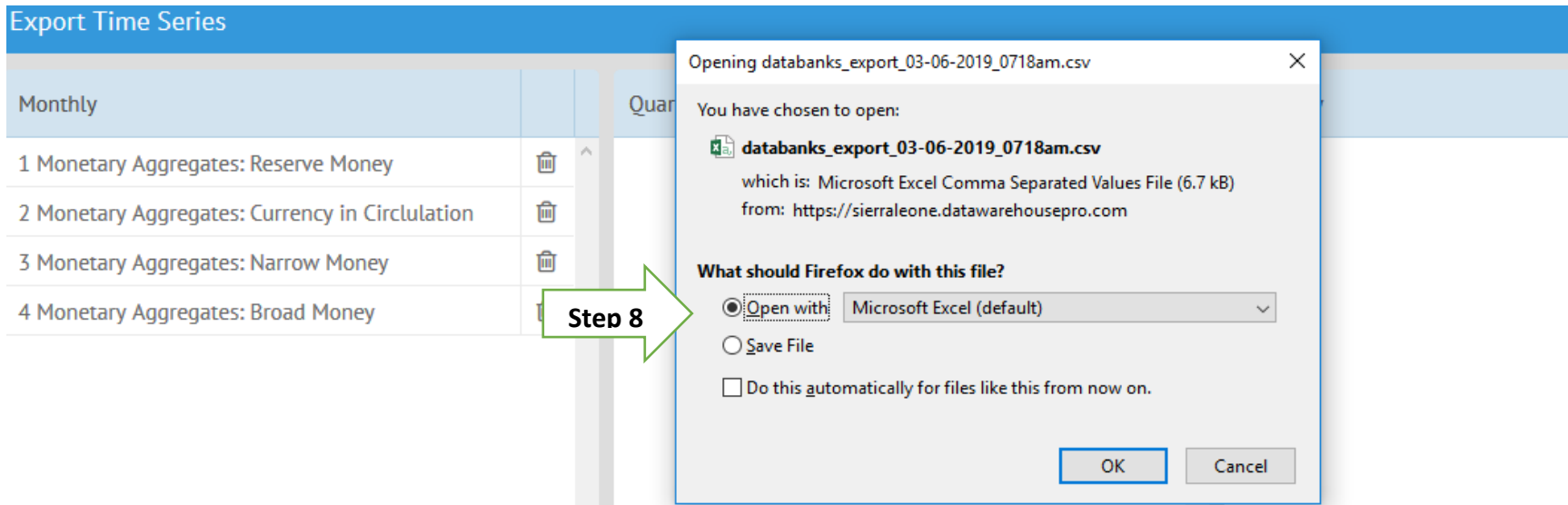
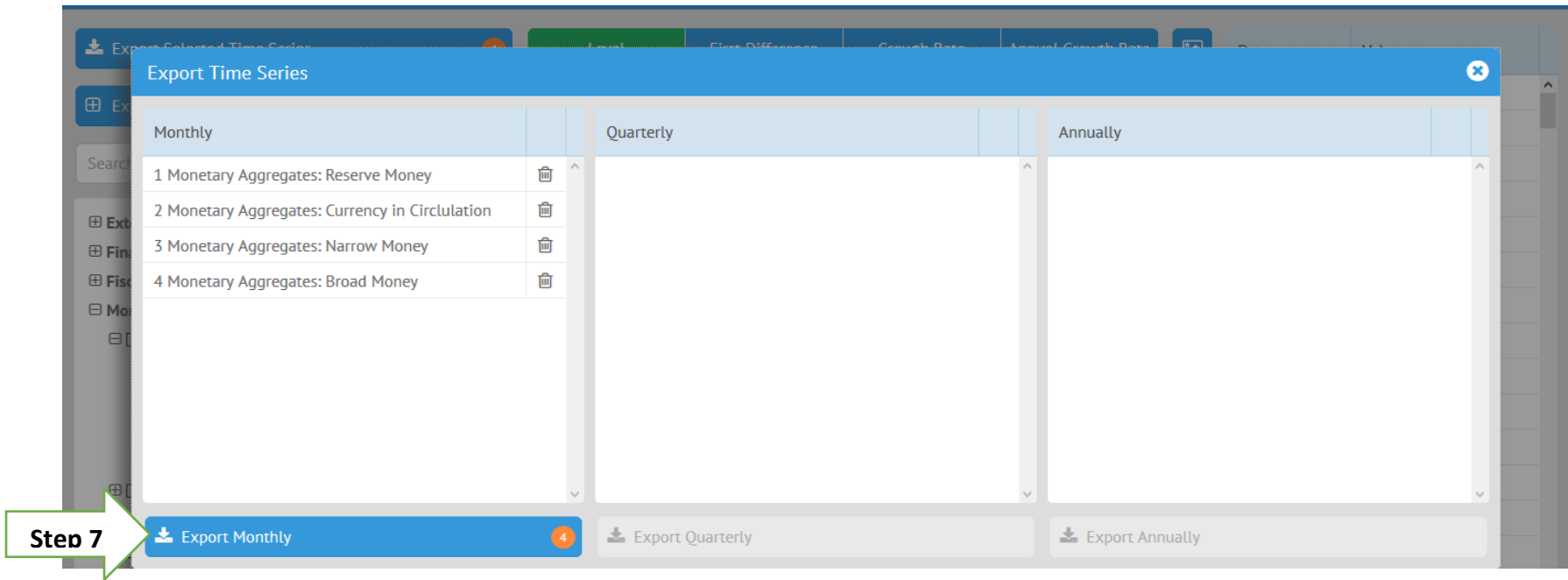
Level First Difference Growth Rate Annual Growth Rate

### 1 Monetary Aggregates: Reserve Money

Date	Value
Dec-01	136948.7416
Jan-02	124390.1337
Feb-02	130361.7214
Mar-02	136302.9689
Apr-02	133726.5089
May-02	144929.3007
Jun-02	137254.3185
Jul-02	135991.5537
Aug-02	132108.9195
Sep-02	137866.8636
Oct-02	135602.9693
Nov-02	141849.4735
Dec-02	171766.4465
Jan-03	160672.7446
Feb-03	159156.9295
Mar-03	164848.9596

Chart Metadata

© Provided by InclusiveAnalytics Ltd. [Contact us](#)



Also copy highlighted data using keyboard shortcut “**ctrl + C**” and paste in excel.

Note: Depending on the electronic device (e.g. computer), date will be incomplete. In this case you may need to adjust the date format to “**dd-mm-yy**” to show complete date in the downloaded series.

- For any further concern, contact us at [res@bsl.gov.si](mailto:res@bsl.gov.si)